

Myer's Rosemeade Auction Photos





#1-12



#13-26



#27-46



#47-65



#60



#66-87



#88-107



#108-126



#127-151



#137



#142, 143, 144, 147, 149



#152-166



#167-193



#180, 181, 182



#194-220



#200



#205, 213, 219



#221-243



#222



#234



#223



#262



#244-265



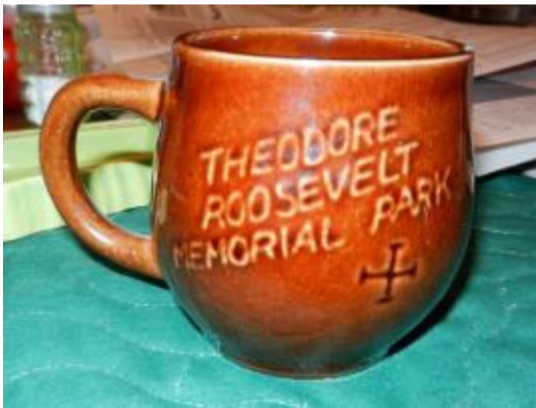
#244



#260



#264



#265



#266-287



#300



#309



#288-310



312-337



#318, 320, 331, 337



#338-360



#366-390



#391-418



#419-451



#435, 442, 446, 448



#440



#444



#420



#425



#451-478



#470



##471, 478, 455



#475



#469



#465



#460



#479-514



#491, 496, 482



#485



#500



#514- 544



#545-574



#515, 522, 536



#520



#544



#530



#535



#550



#573



#560



#547



#569



#565



#570



#575-602



#575



#580



#600



#592, 597, 602, 599



#595



#603-635



#620



#603,630



#634



#621



#615



#636-660



#636, 638, 639, 640, 655, 659



#650



#661-683



#683-712



#708

#695

#690

#706



#710

#684

#704

#712



#713-738

#720



#730

#738-764



#750 (both sides)



#760



#763



#763-791



#785

#783



#790



#775

#780



#792-810



#811-836



#800



#810



#805



#825



#838-851



#851-864



840#



#850



#858



#855



##860

#863



#863 (front and back)



#859



#865 (upper wing on the furthest right seagull has been broken, the break is visible in the photo, and no, I didn't do it, whew!)